

## Flanged Ball Valve, ANSI Class 300, Full Port, Sizes 1/2" ~ 8"

B42

The SVF Series B42 Flanged Ball Valves are high performance, full ported valves certified to API-607 fire safe design, ISO Top Works for actuation, and a selection of seats and seals for a wide range of industrial applications.

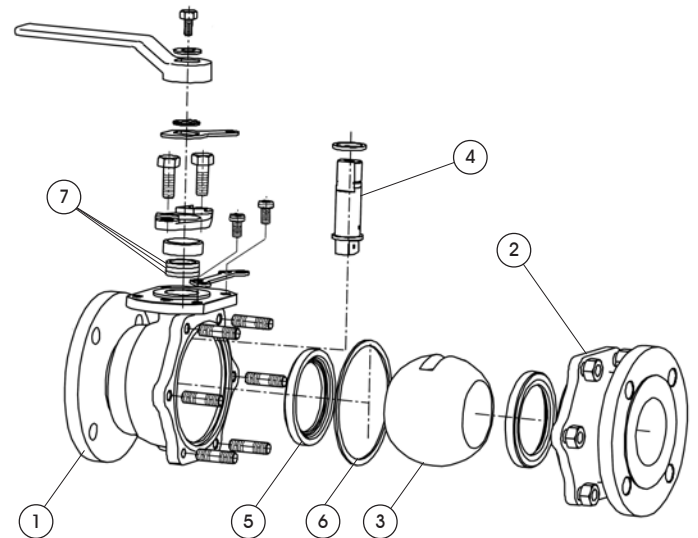
### SERIES B42 DESIGN FEATURES

- ✓ Standard Fire Safe Certification to API 607, Anti-Static
- ✓ Standard NACE MRO175
- ✓ ISO 5211 mounting pad for easy actuation
- ✓ Standard seat material is RTFE
- ✓ Optional Carbon Filled TFE seats for higher temperature, steam and thermal fluid applications
- ✓ Standard locking handle in both open and closed positions
- ✓ Blowout proof stem adds safety & reliability



### MATERIALS OF CONSTRUCTION

ITEM	DESCRIPTION	MATERIALS SPECIFICATIONS (Additional options available)
1	Body	316 Stainless Steel (ASTM A351 CF8M) Carbon Steel (ASTM A216 WCB)
2	End Cap	316 Stainless Steel (ASTM A351 CF8M) Carbon Steel (ASTM A216 WCB)
3	Ball	316 Stainless Steel (ASTM A351 CF8M)
4	Stem	316 Stainless Steel (ASTM A276)
5	Seat	RTFE, Carbon Filled TFE
6	Body Seal	SPW304+GRAFOIL®, PTFE
7	Stem Seal	Expanded Graphite+Corrosion Inhibitor, RTFE



### SPECIFICATION STANDARDS OF COMPLIANCE

SVF Series B42 Ball Valves are available in designs that meet the following Industry Standards:

- ISO
- ANSI
- NACE
- MSS
- ASME
- ASTM
- API

Contact SVF for specific applications

*What do you need today?*™

**HIGH PURITY**  
**CleanFLOW**  
[www.CleanFLOW.net](http://www.CleanFLOW.net)

**PRO-SPEC**  
 PROCESS SPECIFIC  
[WWW.PRO-SPEC.NET](http://WWW.PRO-SPEC.NET)

**QUALITY FLOWS**  
 THROUGH US

Subject to revisions. Please visit [www.SVF.net](http://www.SVF.net) for the latest updates on this Data Sheet. All Data Sheets posted on our website supersede all prior publications • [Document #DDS-B42-12\_2010 • Series B42 Data Sheet - 12/01/2010]

[www.SVF.net](http://www.SVF.net)

SVF Flow Controls, Inc. • 13560 Larwin Circle • Santa Fe Springs, CA 90670 • Tel: 1.800.783.7836 • FAX: 562.802.3114  
 Sales@SVF.net • Visit our website: [www.SVF.net](http://www.SVF.net) • © SVF Flow Controls, Inc. • Specifications subject to change without notice

**Flanged Ball Valve, ANSI Class 300, Full Port, Sizes 1/2" ~ 8"**

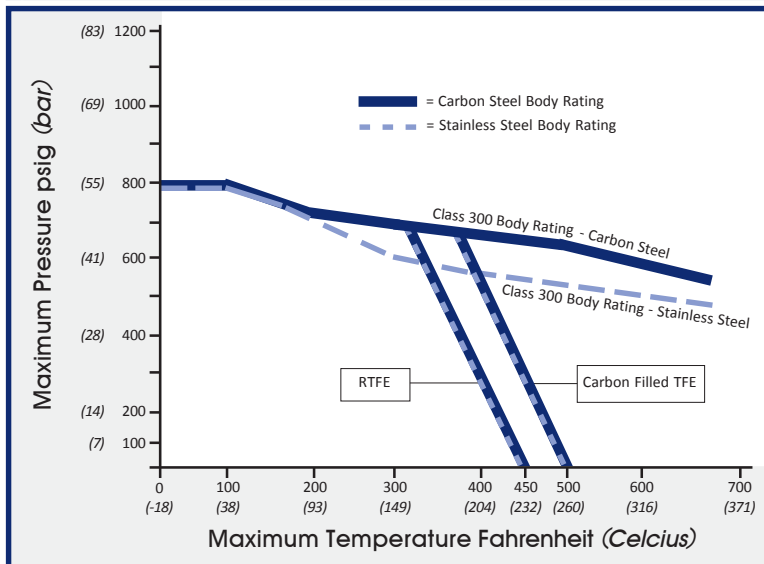
**B42**

**DIMENSIONS, WEIGHT, C<sub>v</sub>, TORQUE**

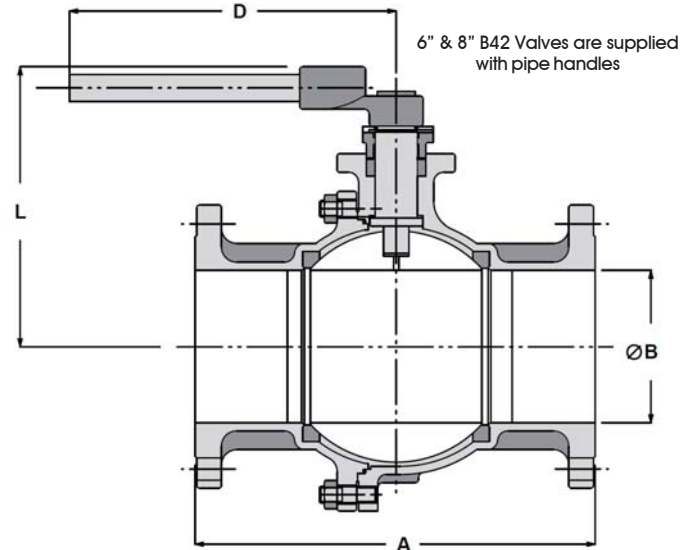
**Torque\* Tables**

Size	A		B		D		L		Weight.		C <sub>v</sub>	RTFE		Carbon Filled	
	in.	mm	in.	mm	in.	mm	in.	mm	lbs	kg		in-lb <sub>f</sub>	Nm	in-lb <sub>f</sub>	Nm
1/2"	5.50	140	0.51	13	5.10	130	3.30	84	6	3	26	80	9	100	11
3/4"	6.00	152	0.75	19	5.10	130	3.46	88	8	4	61	100	11	140	16
1"	6.50	165	1.00	25	6.10	155	4.01	102	12	6	113	150	17	180	20
1-1/2"	7.50	191	1.50	38	9.10	231	5.19	132	24	11	270	300	34	450	51
2"	8.50	216	2.00	51	9.10	231	5.79	147	32	15	500	500	56	700	79
2-1/2"	9.50	241	2.50	64	13.80	351	5.98	152	48	22	800	800	90	910	103
3"	11.13	283	3.00	76	13.80	351	6.93	176	66	30	1200	1400	158	1750	198
4"	12.00	305	4.00	102	17.70	450	8.27	210	110	50	2200	2000	226	2500	282
6"	15.86	403	6.00	152	23.60	599	11.00	279	221	101	5300	8000	904	10100	1141
8"	19.75	502	8.00	203	31.50	800	13.00	330	390	177	9700	18000	2034	19000	2147

**B42 - PRESSURE/TEMPERATURE CHART**



\* At full differential pressure



**HOW TO ORDER SERIES B42 BALL VALVES**

SERIES	BODY & END MATERIAL	BALL & STEM MATERIAL	SEAT	BODY SEAL	ENDS	SIZE	
B42 = Full Port ANSI Class 300 Flanged	44 = Carbon Steel Body & Flanged Ends A216 WCB  66 = 316 Stainless Steel Body & Flanged Ends A351 CF8M	66 = 316 Stainless Steel Ball A351 CF8M & 316 Stainless Steel Stem A276 316	R = RTFE  C = Carbon Filled TFE	G = GRAFOIL® (Standard)  T = PTFE <sup>1</sup>	300  300A (6" & 8" Only)	05 = 1/2" 07 = 3/4" 10 = 1" 15 = 1-1/2" 20 = 2"	25 = 2-1/2" 30 = 3" 40 = 4" 60 = 6" 80 = 8"
<div style="border: 1px solid red; padding: 5px; display: inline-block;"> <b>NOTE: Valves with PTFE Body Seals &amp; RTFE Stem Seals are not fire safe</b> </div>							
<b>Order Example: (B42666RG30005)</b>							
<b>Example Description: Full Port, 316 Stainless Steel Body, Ball &amp; Stem, RTFE Seat, GRAFOIL® Body Seal, 1/2" Size</b>							
B42	66	66	R	G	300	05	